



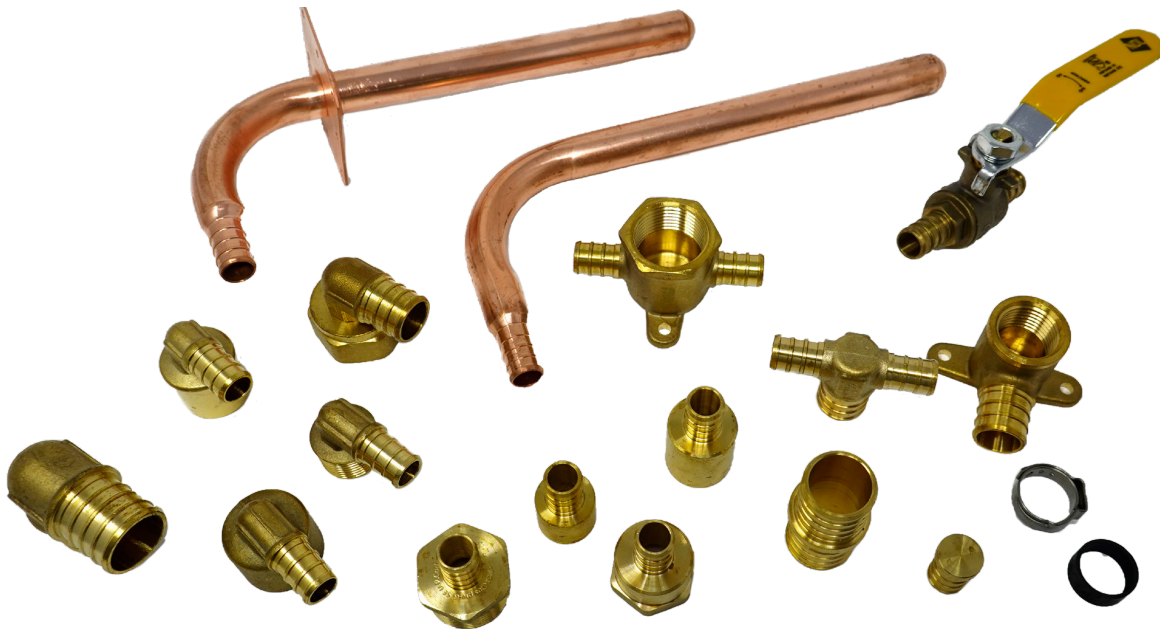
NDL Industries

APPLICATIONS

Residential and Commercial Plumbing

F1807 Brass PEX

NDL F1807 PEX fittings and ball valves redefine the standard for durability.



Specifications

Lead-free brass PEX fittings are purposefully engineered components tailored for the specialized realm of plumbing applications. These fittings are crafted with meticulous attention to detail, ensuring both reliability and compliance with stringent safety standards. Made from high-quality brass (C46500), they offer excellent corrosion resistance and exhibit superior durability. Designed specifically for PEX plumbing systems, these fittings provide seamless compatibility, enabling efficient and secure connections. Plumbing specialists can rely on these precisely engineered fittings to meet the demands of their projects while prioritizing health and safety with their lead-free composition. NDL's lead-free brass F1807 PEX FITTINGS are dezincification-resistant (DZR) brass specification UNS C46500, and range in sizes from 1/2" to 1" in diameter. Maximum working pressure: 100 PSI (689.5 kPa). cold working pressure (CWP) is at 400 PSI.

Certifications and Approvals

- NSF/ANSI standard 14, 61
- NSF/ANSI standard 372 (Low Lead)
- SE CSA B137.5

Certifications and Approvals

- ANSI/NSF 61, 14, 372
- cUPC
- CSA



F1807 Brass PEX Fittings

PRODUCT	PART #	OD - DESCRIPTION	PRODUCT	PART #	OD - DESCRIPTION	
90° ELBOWS PEX X PEX	BRP7-08	1/2" 90° Elbows Pex x Pex	FEMALE ADAPTERS PEX X FPT	BRP3-08	1/2" Female Adapters Pex x FPT	
	BRP7-12	3/4" 90° Elbows Pex x Pex		BRP3-08-12	1/2" x 3/4" Female Adapters Pex x FPT	
	BRP7-12-08	3/4" x 1/2" 90° Elbows Pex x Pex		BRP3-12	3/4" Female Adapters Pex x FPT	
	BRP7-16	1" 90° Elbows Pex x Pex		BRP3-16	1" Female Adapters Pex x FPT	
90° ELBOWS PEX X FEMALE SWEAT	BRP7C-08	1/2" 90° Elbows Pex x Female Sweat	MALE ADAPTERS PEX X MALE SWEAT	BRP02-06-08	3/8" x 1/2" Male Adapters Pex x Male Sweat	
	BRP7C-08-12	1/2" x 3/4" 90° Elbows Pex x Female Sweat		BRP02-08	1/2" Male Adapters Pex x Male Sweat	
	BRP7C-10-12	5/8" x 3/4" 90° Elbows Pex x Female Sweat		BRP02-08-12	1/2" x 3/4" Male Adapters Pex x Male Sweat	
	BRP7C-12	3/4" 90° Elbows Pex x Female Sweat		BRP02-10-08	5/8" x 1/2" Male Adapters Pex x Male Sweat	
90° ELBOWS PEX X MALE SWEAT	BRP7C-2-08	1/2" x 1/2" 90° Elbows Pex x Male Sweat		BRP02-10-12	5/8" x 3/4" Male Adapters Pex x Male Sweat	
	BRP7C-2-08-12	1/2" x 3/4" 90° Elbows Pex x Male Sweat		BRP02-12	3/4" Male Adapters Pex x Male Sweat	
	BRP7C-2-10-12	5/8" x 3/4" 90° Elbows Pex x Male Sweat		BRP02-12-16	3/4" x 1" Male Adapters Pex x Male Sweat	
	BRP7C-2-12	3/4" x 3/4" 90° Elbows Pex x Male Sweat		BRP02-16	1" Male Adapters Pex x Male Sweat	
	BRP7C-2-12-08	3/4" x 1/2" 90° Elbows Pex x Male Sweat	MALE ADAPTERS PEX X MPT	BRP4-08	1/2" Male Adapters Pex x MPT	
90° ELBOWS PEX X MPT	BRP74-08	1/2" 90° Elbows Pex x MPT		BRP4-08-12	1/2" x 3/4" Male Adapters Pex x MPT	
	BRP74-10-08	5/8" x 1/2" 90° Elbows Pex x MPT		BRP4-10-08	5/8" x 1/2" Male Adapters Pex x MPT	
	BRP74-12	3/4" 90° Elbows Pex x MPT		BRP4-12	3/4" Male Adapters Pex x MPT	
	BRP74-12-16	3/4" x 1" 90° Elbows Pex x MPT		BRP4-12-08	3/4" x 1/2" Male Adapters Pex x MPT	
BALL VALVES	PXBV-08	1/2" Pex x Pex Ball Valve	MALE ADAPTERS PEX X MPT	BRP4-16	1" Male Adapters Pex x MPT	
	PXBV-12	3/4" Pex x Pex Ball Valve		BRP4-16-12	1" x 3/4" Male Adapters Pex x MPT	
	PXBV-16	1" Pex x Pex Ball Valve		PLUGS	BRPTEST-06	3/8" Plugs
BLACK COPPER CRIMP RINGS	BRP0CR-08	1/2" Black Copper Crimp Rings			BRPTEST-08	1/2" Plugs
	BRP0CR-12	3/4" Black Copper Crimp Rings			BRPTEST-12	3/4" Plugs
	BRP0CR-16	1" Black Copper Crimp Rings	BRPTEST-16		1" Plugs	
COUPLINGS	BRP0-08	1/2" Couplings Pex x Pex	STAINLESS STEEL CRIMP RINGS		BRP0CR-S-06	3/8" Stainless Steel Crimp Rings
	BRP0-10	5/8" Brass Pex x Pex Couplings		BRP0CR-S-08	1/2" Stainless Steel Crimp Rings	
	BRP0-12	3/4" Couplings Pex x Pex		BRP0CR-S-10	5/8" Stainless Steel Crimp Rings	
	BRP0-12-08	3/4" x 1/2" Couplings Pex x Pex		BRP0CR-S-12	3/4" Stainless Steel Crimp Rings	
	BRP0-16	1" Couplings Pex x Pex		BRP0CR-S-16	1" Stainless Steel Crimp Rings	
	BRP0-16-12	1" x 3/4" Couplings Pex x Pex		STUBOUT ELBOWS	BRPST-08-318	1/2", 3-1/2" x 8" Stubout Elbows
	DROP EAR ELBOWS	BRP735-3-08	1/2" Drop Ear Elbows Pex x FPT		BRPST-08-38	1/2", 3" x 8" Stubout Elbows
BRP735-3-12-08		3/4" x 1/2" Drop Ear Elbows Pex x FPT	BRPST-12-48		3/4", 4" x 8" Stubout Elbows	
DROP EAR TEES	BRPD-08-08-12	1/2" x 1/2" x 3/4" Drop Ear Tees Pex x Pex	STUBOUT ELBOWS W/ TEES	BRPSS-08	1/2", 3" x 8" Stubout Elbows with Strap	
	BRPD-12-12-12	3/4" Drop Ear Tees Pex x Pex x FPT		BRPSS-12	3/4", 4" x 8" Stubout Elbows with Strap	
	BRPD-16-16-12	1" x 1" x 3/4" Drop Ear Tees Pex x Pex x FPT		BRPT-08	1/2" Tees Pex x Pex x Pex	
FEMALE ADAPTERS PEX X FEMALE	BRP0C-06-08	3/8" x 1/2" Sweat Adapters Pex x Female	REDUCING TEES	BRPT-10	5/8" Tees Pex x Pex x Pex	
	BRP0C-08	1/2" Sweat Adapters Pex x Female		BRPT-12	3/4" Tees Pex x Pex x Pex	
	BRP0C-08-12	1/2" x 3/4" Sweat Adapters Pex x Female		BRPT-16	1" Tees Pex x Pex x Pex	
	BRP0C-10-08	5/8" x 1/2" Sweat Adapters Pex x Female		BRPT-08-08-12	1/2" x 1/2" x 3/4" Reducing Tees Pex x Pex	
	BRP0C-10-12	5/8" x 3/4" Sweat Adapters Pex x Female		BRPT-12-08-08	3/4" x 1/2" x 1/2" Reducing Tees Pex x Pex	
	BRP0C-12	3/4" Sweat Adapters Pex x Female		BRPT-12-08-12	3/4" x 1/2" x 3/4" Reducing Tees Pex x Pex	
	BRP0C-16	1" Sweat Adapters Pex x Female		BRPT-12-12-08	3/4" x 3/4" x 1/2" Reducing Tees Pex x Pex	
				BRPT-16-08-12	1" x 1/2" x 3/4" Reducing Tees Pex x Pex	
		BRPT-16-12-12		1" x 3/4" x 3/4" Reducing Tees Pex x Pex		
		BRPT-16-12-16		1" x 3/4" x 1" Reducing Tees Pex x Pex x Pex		
		BRPT-16-16-08		1" x 1" x 1/2" Reducing Tees Pex x Pex x Pex		
		BRPT-16-16-12		1" x 1" x 3/4" Reducing Tees Pex x Pex x Pex		



Explore our full line of high-quality HVAC-R and plumbing products.

ndlinc.com | 1-866-635-6888 | sales@ndlinc.com

@ndlindustries

