



NBV Full Port Ball Valves

TECHNICAL SPECIFICATIONS SUBMITTAL FORM

Job Name:	Submittal Date:	Wholesaler:
Job Location:	Engineer/Architect:	Contractor:

Product Use:

Full port ball valve for use in refrigeration, commercial HVAC, VRV, VRF, multi-mini split, and sub-critical applications.

Design and Features:

- Full port valves with 900 PSIG working pressure on sizes up to 7/8"
- Compatible with HCFC, HFC, HC, and HFO refrigerants and oils
- Twice sealing on the valve stem using PTFE seal technology
- Rupture-proof encapsulated stem and bi-directional flow
- Two-piece stem cap
- One piece brass oven-brazed body
- 100% leak tested
- Stamped with serial number and packaged in poly-bag
- Two-year warranty

Operating Specifications:

- Temperature: -40° to 302°F (-40°C to 150°C)
- Burst Pressure: 5 times the working pressure
- Leak Rate: <0.02g/year
- Life Expectancy: >50,000 cycles

Certifications and Approvals:

- UL/cUL 207
- CRN recognized
- CE approved
- RoHS compliant

NBV Pressure Ratings and Weight

PART #	DESCRIPTION	MAX PRESSURE		WEIGHT	
		PSI	BAR	LB	KG
NBV02	1/4" Full Port Ball Valve	900	62	0.419	0.190
NBV03	3/8" Full Port Ball Valve	900	62	0.470	0.213
NBV04	1/2" Full Port Ball Valve	900	62	0.470	0.213
NBV05	5/8" Full Port Ball Valve	900	62	0.650	0.295
NBV06	3/4" Full Port Ball Valve	900	62	1.113	0.505
NBV07	7/8" Full Port Ball Valve	900	62	1.191	0.540
NBV09	1-1/8" Full Port Ball Valve	700	48	1.929	0.875
NBV11	1-3/8" Full Port Ball Valve	700	48	3.098	1.405
NBV13	1-5/8" Full Port Ball Valve	700	48	5.082	2.305
NBV17	2-1/8" Full Port Ball Valve	700	48	8.664	3.930
NBV21	2-5/8" Full Port Ball Valve	650	45	14.275	6.475
NBV25	3-1/8" Full Port Ball Valve	650	45	20.988	9.520
NBV33	4-1/8" Full Port Ball Valve	450	31	36.663	16.630



NBV Materials

PART	MATERIAL
STUBOUTS	Copper
SEALS & SEATS	Teflon (PTFE)
CAP	Brass
STEM	Stainless Steel
LOCK NUT	Brass, Stainless Steel
BODY	Brass
BALL	Stainless Steel

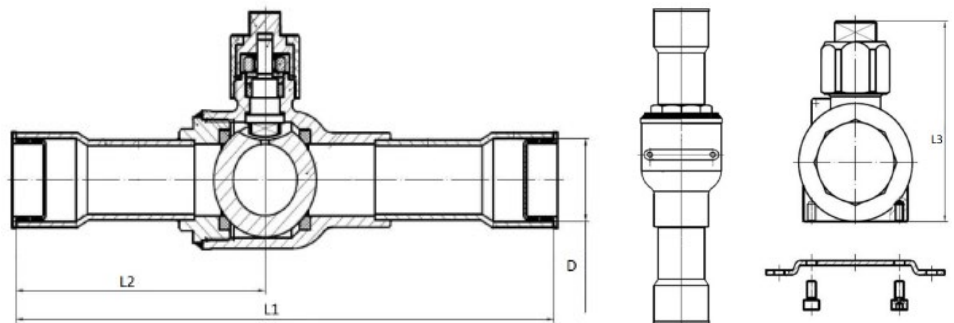


NBV Full Port Ball Valves

NBV Dimensions

MODEL	SIZE	MAX WORKING PRESSURE		D		L1		L2		L3		WEIGHT	
		PSIG	BAR	MM	IN	MM	IN	MM	IN	MM	IN	LB	KG
NBV02	1/4"	900	62	0.25	6.40	4.96	126.00	2.09	53.00	2.02	51.30	0.419	0.190
NBV03	3/8"	900	62	0.38	9.58	4.96	126.00	2.09	53.00	2.02	51.30	0.470	0.213
NBV04	1/2"	900	62	0.50	12.75	5.02	127.50	2.13	54.00	2.02	51.30	0.470	0.213
NBV05	5/8"	900	62	0.63	15.93	5.91	150.00	2.57	63.30	2.30	58.40	0.650	0.295
NBV06	3/4"	900	62	0.75	19.10	6.46	164.00	2.91	74.00	2.60	66.00	1.113	0.505
NBV07	7/8"	900	62	0.88	22.28	7.46	189.50	3.39	86.00	2.60	66.00	1.191	0.540
NBV09	1-1/8"	700	48	1.13	28.65	8.23	209.00	3.82	97.00	3.27	83.00	1.929	0.875
NBV11	1-3/8"	700	48	1.38	35.00	9.00	228.60	4.29	109.00	3.88	98.50	3.098	1.405
NBV13	1-5/8"	700	48	1.63	41.35	9.50	241.30	4.53	115.00	4.43	112.50	5.082	2.305
NBV17	2-1/8"	700	48	2.13	54.05	10.50	266.70	5.16	131.00	5.18	131.60	8.664	3.930
NBV21	2-5/8"	650	45	2.63	66.75	14.96	380.00	7.24	184.00	6.02	153.00	14.275	6.475
NBV25	3-1/8"	650	45	3.13	79.45	16.14	410.00	7.80	198.00	6.83	173.40	20.988	9.520
NBV33	4-1/8"	450	31	4.13	104.85	17.72	450.00	8.70	221.00	8.18	207.80	36.663	16.630

	NBV02	1/4" Full Port Ball Valve
	NBV03	3/8" Full Port Ball Valve
	NBV04	1/2" Full Port Ball Valve
	NBV05	5/8" Full Port Ball Valve
	NBV06	3/4" Full Port Ball Valve
	NBV07	7/8" Full Port Ball Valve
	NBV09	1-1/8" Full Port Ball Valve
	NBV11	1-3/8" Full Port Ball Valve
	NBV13	1-5/8" Full Port Ball Valve
■	NBV17	2-1/8" Full Port Ball Valve
	NBV21	2-5/8" Full Port Ball Valve
	NBV25	3-1/8" Full Port Ball Valve
	NBV33	4-1/8" Full Port Ball Valve



The information contained herein is not intended to replace the full product installation and safety information available or the experience of a trained product installer. You are required to thoroughly read all installation instructions and product safety information before beginning the installation of a product.

All installations must completely comply with all NDL Industries warnings and instructions, national state and local codes and all applicable ANSI standards.

NDL Industries product specifications in U.S. customary units and metric are approximate and are provided for reference only. For precise measurements, please contact Customer

Service. NDL Industries reserves the right to change or modify product design, construction, specifications, or materials without prior notice and without incurring any obligation to make such changes and modifications on NDL products previously or subsequently sold.



Explore our full line of high-quality HVAC-R and plumbing products.

ndlinc.com | 1-866-635-6888 | sales@ndlinc.com

@ndlindustries

